



# The CRM&HA Inc. Newsletter

January/February 2008      Dennis Moriarty/Editor      Volume 17 Number 1  
Meetings are held at 7:15 PM on the 1<sup>st</sup> Thursday of the month at the Central Railway Museum

## Headline: Train Show

**Editorial**  
**By Dennis Moriarty**

They say a picture is worth a thousand words. This newsletter, therefore, has more than 66 thousand words. Enjoy

**Remember to mark your calendar for the 2008 train show on February 23 and 24. This is going to be the largest train show we ever attempted and the profits will be used for the new Central Railway museum. We will need your help to make this happen. More information about what jobs will be needed will be sent out by email at a later date. A flyer giving the information about the show is near the end of the newsletter.**

Bob Folsom and his wife Jeanne graciously opened their home for the Christmas Party on December 6th. The party was a great success and Bob is a good cook. Thanks again Bob and Jeanne.

The President (Engineer and CEO) and Secretary (Stationmaster) election was held at the December meeting. Congratulations to Jim Reece and Brian d'Entremont on being reelected to your posts.

**Tools and supplies** are going to be needed to build the new layout at the Central Railway Museum. Please check your shop for tools, that you no longer need, that you would be willing to donate to the club once we have a secure location to store them. Also, if you have left over materials from building your layout or other materials that

can be utilized on the new layout please consider donating them.

Please **email information** for the next newsletter or hand it to me at a meeting before **February 12<sup>th</sup>**. Please, you do not need to wait until February 12<sup>th</sup>. Newsletter information will be accepted anytime.

Thank you Jim Reece, Bob Folsom, Howard Garner, and Don Rumer for your contributions to the newsletter this month.

Also, thank you Howard Garner for managing the club website.

### CEO COMMENTS BY JIM REECE

Once again Jeanne and Bob Folsom created the atmosphere for a wonderful Christmas Party. It included terrific food, friends and hosts. Many thanks to them for all the effort it takes to host our party.

### HAPPY NEW YEAR

The year of 2007 has past and the Central Railway Model & Historical Assoc. Inc. has a challenge ahead if we are going to match last year's accomplishment in 2008. We started the year thinking that the Museum was a possibility and in July we sign a lease making it a reality. By the end of the year we will have completed the demolition and reconstruction phase of the inside of the structure. The majority of rewiring the building will be completed. And we will be well into insulating the walls and replacing most of the required drywall. During that same period of time the City finished roofing the building, painted the

outside and installed heating and air conditioning. Last January we were just beginning to believe that a new home for the club could be in our future. This January we will hold our first monthly meeting in that home, the Central Railway Museum. In December of 2008 we will have trains running and host the Christmas Party at the Museum.

But that's not all we accomplished in 2007. We added 12 new members to the club. These are active members that without their new enthusiasm and help much of what was accomplished would not have been possible. We are moving forward toward establishing a much larger annual Train Show. We finally took steps to make sure CRM&HA was incorporated, and we purchased liability insurance to protect club members.

In closing I will quote myself from last Jan./Feb. CEO Comments. "The future for CRM&HA looks bright. This coming year can be one of the best in the club's history. With a new home we have the opportunity to grow as a club. Which includes larger active membership, develop and build a show class model railroad and the ability to make an impact in the upstate."

I look forward to working with each of you in 2008 as we work and play to meet our goals. Janie and I want to wish you and yours the best in the coming New Year.

**Minutes – Regular Meeting  
Bob Folsom's House  
DECEMBER 6, 2007**

The regular December meeting of the CRM&HA, INC. was called to order at 8:15 PM by President Jim Reece. Jim asked Bob Folsom to act as secretary in the absence of Brian d'Entremont who is out of town scheduled for surgery.

The club welcomed new member Sandy Eustis. A short treasurer's report was given by Howard Garner. It was noted that the Town of Central has already reimbursed the club for approximately \$800 worth of expenses in remodeling the Museum.

**OLD BUSINESS**

There was some discussion of the club's insurance, including liability and personal property. There was a question regarding occupancy of the Museum (or the fact that there is no one there except one day a week), but no action can be taken until we hear further details from the insurer. No action was taken yet on personal property insurance. There were some positive comments about dealer participation at the February Train Show. One question was raised about the \$1200 cost of newspaper advertising, but it was explained that the ads would be in several papers. Rob Seel was going to e-mail the flyer again to club members needing more to pass out. A progress report was given regarding the Museum, the most important item being that the HVAC is installed and operational. It was agreed to have a work session on December 8. Dale volunteered to pick up four florescent light fixtures to be installed in the meeting room.

A number of members paid the new \$25 dues. Dennis mentioned that the deadline for the next newsletter is December 12. Elections were held for President and Secretary. Nominations were made at the November meeting: Jim Reece for president, and Brian d'Entremont for secretary. There were no other nominations, so the nominations were closed. The slate presented for election was adopted unanimously.

**NEW BUSINESS**

It was agreed to continue our NMRA membership, and to also join the Central Area Business Council for a fee of \$25. Bob Folsom will take care of getting the CRM&HA into the CABC. Dale gave some guidelines regarding how upcoming club meeting programs will be described; and invited club members to start signing up for presentations. Richard Nichols passed out Nichols Electronics calendars to everyone. There are also more, which will be available at the museum and at the next meeting.

It was agreed that the next meeting (January 3) will indeed be held at the Central Railway Museum. Steve Zonay loaned four folding chairs

and Bob Folsom contributed a 6' table, but club members are encouraged to bring a chair with them to the January meeting.

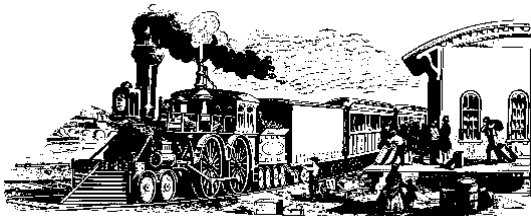
*Respectively Submitted*

*Bob Folsom acting Stationmaster*

## CENTRAL RAILWAY MUSEUM PROGRESS REPORT

By Bob Folsom

Light fixtures have been installed in the meeting room so that we will be able to have our January 3rd meeting there. We will also determine at that time if those fixtures provide enough light. Patches were made in the Sheet rock to allow electrical boxes to be installed. Insulation bats were installed in the stud spaces that opened to the crawl space. This will prevent cold air from entering the walls, and will also keep the blown-in insulation from spilling out the bottom during installation. It was discovered that the water has been shut off. Jim Reece will call Phil Mishoe about that and also about having a dumpster again next week. Jim will also check with Howard about the possibility of doing the blown-in insulation next Saturday, December 15. If so, Jim will stop by Lowe's and make arrangements. There will be a work session on December 15, which will either do insulation or start installing the electric boxes. There will not be a work session on December 22. It will be decided on December 15 if there needs to be a work session on December 29 in order to be ready for the club meeting on January 3.



### Pictorial of Progress

The CRM&HA Inc.

Central Railway Museum

Photos by Jim Reece and Dennis Moriarty

The CRM&HA Inc. has met at the Pickens County Library for several years. It is planned to move the meetings to the Central Railway Museum when the club members complete enough of the

work in the museum to allow the meetings to be held there. At this point the heating and air conditioning has been installed and it looks like the first meeting may be January 3<sup>rd</sup>. An email will be sent to confirm. Members would be required to bring their own chairs. Enjoy the before and after pictures and the progress photos.



The following are pictures of the way the outside of the old Allen House looked when the club first heard that the City of Pickens was willing to allow the CRM&HA Inc. to convert the old building into a RR museum and to use it as a club house. Next to the pictures is the way the building looked when the City finished working on the outside. It's amazing what a little TLC and paint can do.

### Looking Northeast





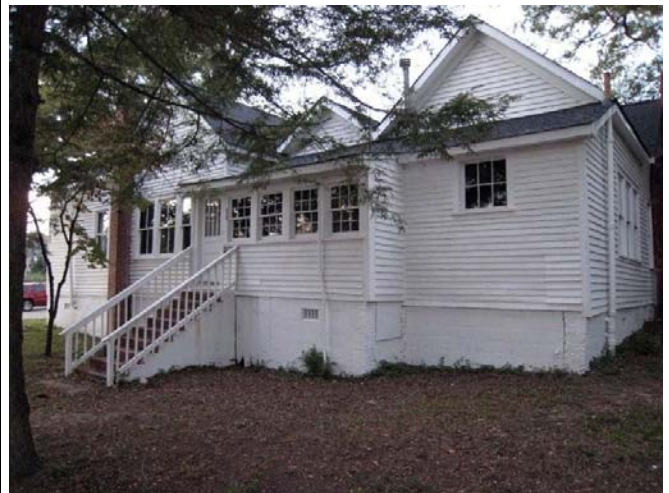


The Front Door Looking North

Our New Address Sign at the Front Door



Another View of the Front Door





**Two Photos Each of the East and South Side Looking Southwest**



**Views Looking South at the West End of the Building**







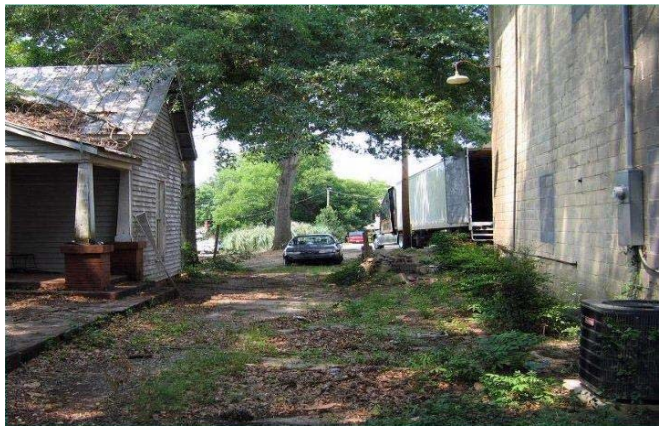
Looking North along the East Side of the Building



The East End as it Looks Now



The Alley at the Back





**A Few Pictures of the Inside before the Interior Tear out Work Begins**



**More Pictures of the Inside before the Interior Tear out Work Begins**



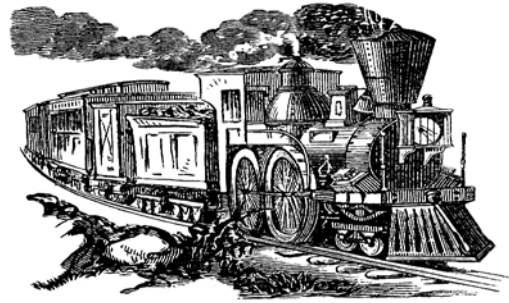


Now the Work Begins clearing out the Unwanted Materials from the Building





What was found on the Ceiling after Removal of the Lower Layer



### My Train Travel in Europe By Don Rumer

Below are photos of our travel in Europe (mostly by train) this past summer. The first three photos are of Waterloo station in London and the yellow Eurostar train that we took to Paris. At this time the fully high-speed link had not been completed in England and the trains continued to originate from Waterloo. That changed this fall. The journey to Paris took about 2 hours and thirty-five minutes. The train was amazingly smooth even at the truly high speeds in France (around 180mph). Aside from the darkness travel through the Chunnel was not noticeable.







In Paris our hotel was near the below level suburban train system which I believe is referred to as the RER. The first photo shows a segment of that. The next two photos show the Paris Gare de Lyon station with the TGV train, which we took to Geneva. The TGV is France's high-speed rail service and went into service in 1981 with this line from Paris to Lyon. The next photo shows signaling along the right-of-way. Like the Eurostar which use TGV technology the train trip is smooth even at speeds near 200mph. The final photo with the blue train in the distance is the station at Geneva Switzerland.







In Switzerland, we took a cog wheel train trip to the village of Zermatt. The first photo shows the red cog wheel train. We walked from the train station to our hotel. Private cars are not permitted in this small village. Our hotel provided a great view of the Matterhorn. After a two night stay we took the Glacier Express train to St. Moritz. The Glacier Express was one of the highlights of the tour. The train and views from the train or shown in the photos. The trip provided a panoramic view of the alpine heartland of Switzerland. We also received a full course meal during the 7 1/2-hour trip. Some of the photos show the large windows that extended to the top of the train for great viewing.







Alps and traveled through Swiss towns and villages often right down the main streets. The homes and gardens were neat as a pin right along the train tracks. The last photo shows an Italian National Railways train. At the station in Tirano, Italy, customs officers look at a few passports and then waved everybody on saying: "Avanti!" We walked from the station to a nearby restaurant. This completed the train portion of our travel.



The photo of the orange loco was on the way to St Moritz. After spending two nights there, we took the Bernina Express into Italy. The next photo shows the station at St Moritz and the train arriving. The next few photos show scenes in Switzerland. This trip was my favorite. We left the

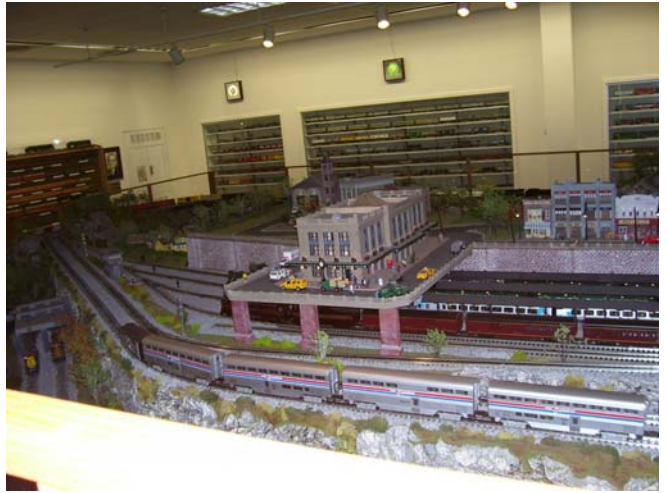




### **Trip to Bryson City, NC By Don Rumer**

Below are some photos from our trip to Bryson City, NC in the spring. They include the Great Smokey Mountain Railroad, (which was a lot of fun to ride) and the museum in town. The museum had an incredible collection of Lionel stuff along with a super tinplate O gauge layout.







**TRIP TO PRO TRAK MEET**  
**By Bob Folsom**

Howard Garner and I took a six-day trip to Warrensburg, Missouri to attend a meeting of ProTrak modelers. Howard is actively involved in using ProTrak and conducted a clinic at the meet. Our host was Jim Duncan who is building a sizeable recreation of the G, M, & O from Chicago to St. Louis. The layout looks like a multi-deck layout, but in reality is a helix with the Chicago or north staging about 12" below the ceiling, and St. Louis or the south staging about 30" above the floor. Every interchange with other roads along the route is represented, Tony Koester style, with a diamond crossing and short segment of the other road's track. The helix appearance is disguised because it wraps around the walls in two major rooms. When facing the layout, North is always to your left. (See picture of me operating). We enjoyed one entire day and two evenings operating this layout. Howard and I did some railfanning on the way to the meet, stopping to see a large club layout in Crossville, Tennessee, and spending several hours exploring railroad yards in East Saint Louis, Illinois. The Crossville Club is located in a shopping mall, and has G, O, HO, N, and Z gauges represented.

(Pix show the Z, N, HO, and G) During our E. St. Louis exploration, we tumbled upon a Sperry Railcar facility (see picture), and saw Metro Link rains in operation (see picture). While at the meet, we also took a trip to Kansas City, Missouri, and Kansas City, Kansas. We visited Kansas City Union Station which among other things, had a modular HO layout in one room, a Lionel layout in another, and had a gigantic multi-gauge layout in the main concourse (see picture). This layout was mostly G-gauge but had some O and S gauge layouts. We also visited Doc's Hobby Shop in KC KS, and Santa Fe Junction on the BNSF and UP (see picture with double deck bridge). After the meet, we visited several home layouts in the Kansas City and Saint Louis areas. I am attaching some pictures but they mostly do not do justice to seeing the real thing.





Jim Duncan's layout can be seen at [www.gulfmobileandohiorr.com](http://www.gulfmobileandohiorr.com)

### First Layouts

I would like to have the members send a picture of their first layout to put in this section of the newsletter. They can be from any era. To start it off, here is my first layout about 1940.

Dennis Moriarty





**The Cascade Western  
By Howard Garner**

The Cascade Western has 4 new projects under construction. The main line extension required the branch line town of German Valley to be modified. Scenery rough in has been started between Buffalo Center and German Valley. The new town of Walker on the main has had the bench work installed, waiting on the roadbed supplier for materials before laying track. The town of Steven Center is moving a grain elevator and expanding the 3-track yard to 5 tracks. The St Paul road (CM&StP) is adding a connection at South Steven Center to two new staging tracks. A new turntable is being installed in the town of Coates. These will be covered in detail on the web site [www.cwrail.com](http://www.cwrail.com)

**Interesting Web Sites**

[www.cwrail.com](http://www.cwrail.com)

**New Member**

**Sandy Eustis recently moved to the area from Cincinnati, Ohio and is planning to start a layout.**

**CMR&HA TRAIN CREW**

**Engineer and CEO: Jim Reece  
General Division Super: Rob Seel  
Stationmaster: Brian d'Entremont  
Paymaster: Howard Garner  
Large Scale Division Super: Bob Hanson  
Program Chair: Dale Reynolds**

**2008 Activities & Meeting Programs**

**2008 programs  
By Dale Reynolds**

At the December meeting, it was decided to have planning sessions rather than programs after the business portions of the January and February meetings at the museum. Therefore, I am looking for programs for March through November. Richard Nichols will do 'Apple Valley Layouts', I will do 'The Blue Ridge Railroad', so please be thinking of what you will present, and just as importantly, what you want to have as programs next year. Merry Christmas and Happy New Year to all members!

**Contact Dale Reynolds (Program Chairman) if you can do a meeting program next year.**

**Club Mail Box**

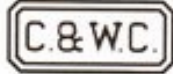
**PO Box 128, Central SC, 29630.**

**Paymaster Mail Box**

**(For Membership Applications and Dues Payments) PO Box 826, Pickens, SC 29671-0826**

# GREENVILLE, SC

February 23 & 24, 2008



## TRAIN SHOW

Models, Art, Collectibles, Railroadiana, & Running Trains!

at the Greenville-Pickens Speedway  
& Upper SC State Fairgrounds

*US Hwy 123 between Easley and Greenville*

*Halfway Between Atlanta & Charlotte*

Saturday 23rd from 9 AM to 5 PM

Sunday 24th from 12 PM to 5 PM

\$ 5 Admission

Children ages 12 and under free with paid adult

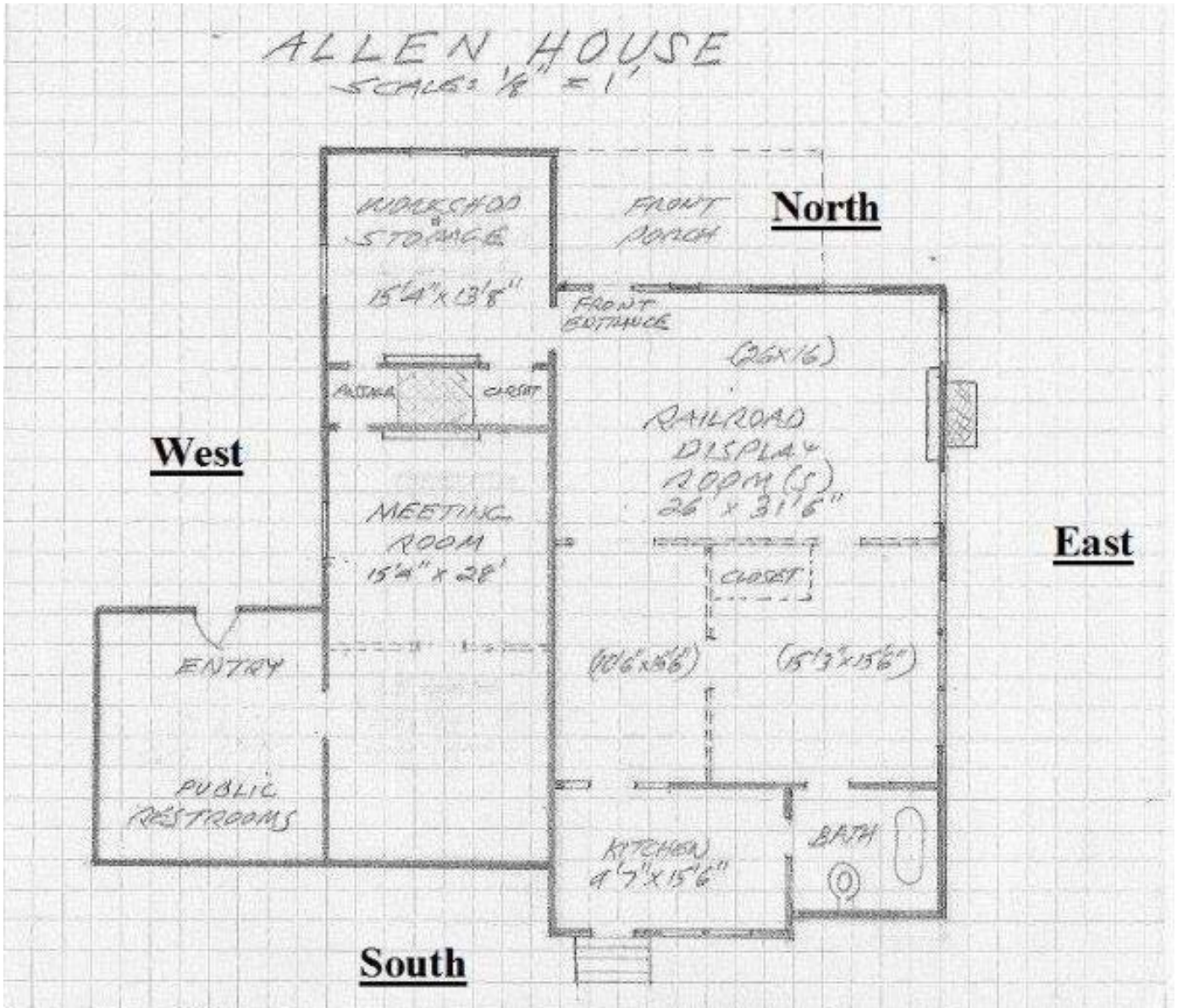


Sponsored by the  
**Central Railway**  
Model & Historical Association

Contact: Rob Seel ph. 864-329-8441 email rseel@yahoo.com  
Dealer: Rent table space (w/ 8' tables): \$25/first table & \$20/inch table thereafter  
call Dave at 864-843-7188 e-mail rgsmat@ncrr.com



**The Existing Plan for the Museum Interior**  
(Note: The Kitchen and Bathroom are existing.)





**Central Railway Model & Historical Association  
Membership Application**

**Name:** \_\_\_\_\_ **Date:** \_\_\_\_\_

**Address:** \_\_\_\_\_ **Phone:** \_\_\_\_\_

**City:** \_\_\_\_\_ **State:** \_\_\_\_\_

**ZipCode** \_\_\_\_\_ **E-Mail Address:** \_\_\_\_\_

1. Declared Interest Group: (Circle yours) Modeling Collecting RR-History Railfan General
2. Other Railroad Interests:

\_\_\_\_\_

3. Modeling Scale: Z N HO S SN3 O G (Circle yours)

4. Railroad Memberships: NMRA NRHS

Other? \_\_\_\_\_

5. Do you have a home layout? Y N Open to Visitors? Y N

6. I can help the Association by:

- Working on one of the modular projects
- Helping with set-up and operation of layouts at shows.
- Organizing an excursion to a show or museum.
- Serving on a committee (i.e. Audit, Publicity, etc.)
- Serving as Officer or Director.
- Preparing a short program for monthly meeting.
- Other: \_\_\_\_\_

7. Please record my membership in the Association for the year. Enclosed is my (check) or (cash) for \$25.00, Send to CRM&HA, PO Box 826, Pickens, SC 29671-0826. Phone (864) 878-4705

Signature \_\_\_\_\_